

INSTRUCTIONS FOR USE AND INSTALLATION DOUBLE WARM IT



Made in France

June 2013

DOUBLE WARM IT

Congratulations for the acquisition of this upmarket appliance made in France. You chose an appliance which alloys the best technical qualities with a big user-friendliness. We wish you the biggest contentment

1. SECURITY INSTRUCTIONS

Please respect these instructions scrupulously to avoid any risk of fire, electric shock, scald or other wounds and damage. During the use of this appliance, fundamental circumspection of security must always be noticed, such as:

- Take into account the instructions to be systematically kept with the appliance.
- Install the appliance always in instructions respect. A 10 cm distance minimum with the partition or the wall is necessary.
- Protect the appliance from direct light of the sun, frost and humidity.
- Never leave the appliance within the reach of children or disabled persons without surveillance.
- Never move the appliance when it is working.
- Check that the appliance is definitely off before connecting it up or disconnecting it.
- Do not touch the hot surfaces of the appliance. The temperature of the hot surfaces can be very important when the appliance is working. Always use control knobs.
- Do not use the appliance for other functions than determined use.
- Do not leave the electrical cord in the contact with hot surfaces.
- The appliance should not be used close to combustible materials.
- During use, look after not to obstruct hearings of aeration of the appliance
- To avoid any electric shock, never plunge the appliance, the cord or plug in water or quite other liquid.
- If the cord is harmed, it must be replaced by the producer, his after sale service or persons of similar skills to avoid any risk.
- Entrust repairs only to a skilled person.
- Use only spare parts of origin.
- Before cleaning the appliance, do not forget to disconnect it.

2. CONTENTS OF CARDBOARD PACKAGING

Device: a double warm it

- Accessories:
- A digital timer
 - Two plastic bottles packed in separated box
 - The present note

See exploded view at the end of the document.

3. CONFORMITY OF USE

This device enables to make more or less liquid your chocolate to put it down more easily on your crepes or waffles. You can realize an economy on the quantity of dough while showing hygiene and speed.

4. WAY OF FUNCTIONING

The heating is direct, there is no bain-marie system.

It is fitted with a thermostat which enables an easy temperature setting and with a switch (n°3 on picture) which enables the control of the rear container.

When the thermostat is on, the green pilot light ignites and the front container is on. The rear container will be on if the switch is pressed and will be controlled by the thermostat also.

It is delivered with two bottles with pour-through stoppers and a capacity of 1 litre.

To fill in your bottle easily avoiding loses, the transfer between the warm it and the chocolate has to be made thanks to a flexible spatula.

Fill the bottle in 3/4, put it in the Warm It, turn the thermostat control knob (n°2 on picture) on the 90°C position (during 15 min). The pilot light (n°1 on picture) ignites. Pre-set 15 min on the digital timer.

Once the 15min are over, set the thermostat on the 60°C position

Keep the machine on during use as the temperature is regulated by the thermostat



1 On/off pilot light

2 Thermostat / commutator

3 Switch

5. FUNCTIONING / MANIPULATION

a) Installation / assembly:

- Unpack carefully the device of its packaging.
- Place it on a plane and heatproof surface.
- Never place the device near a wall or near a partition made of combustible materials even if it is very well isolated.
- A distance of minimum 10 cm with the partition or the wall is necessary.
- Unpack all the accessories, clean and dry them

b) First starting:

Fill the bottle in 3/4

First cleaning

Clean the device before the first use. (See 6. Cleaning)

Connection of the device

- Check that the tension and the frequency of the electricity network suit to the values indicated on the descriptive plate.
- Check that neither the cord nor the plug are damaged
- Make sure that every control knob is positioned on 0.

- Unwind completely the electric power cable and connect it in a plug connected with the earth.

- The device is connected.

NB: in case of connection of the device in a plug without earth protection or directly on the electricity network, confide its connection to a qualified person .

c) Use of device :

Elements of command and display

Command/Display	Function
Thermostat (n°2 on picture)	Temperature setting
Green pilot light (n°1 on picture)	Machine on (pilot light on) Machine off (pilot light off)
Switch (n°3 on picture)	On/off for the rear container

Putting on

Turn on the thermostat control knob (n°2 on picture) on the 90°C position during 15 min: the green pilot light (n°1 on picture) ignites.

Preset 15 min on the digital timer

Once the 15min are over, set the thermostat on the 60°C position

The switch (n°3 on picture) enables to put the rear container on/off. It will be then automatically regulated by the thermostat.

Temperature setting

The temperature is regulated through the thermostat

Stopping the appliance

Set thermostat control knob (n°2 on picture) on 0, the pilot light turns off, the appliance is no longer functioning.

Let the device cool

Disconnect the power cable.

Clean the appliance. (see 6. Cleaning)

d) Breakdown / repair:

In case of breakdown or of damaged part, please call your after-sales service and confide any technical operation to qualified person.

When you contact the after-sales service of your distributor or your store, give him the complete reference of your device (commercial name, type and serial number). This information appears on the visible descriptive plate behind the device.

6. CLEANING AND MAINTENANCE

Disconnect the device.

- Let cool completely the device before any technical intervention or cleaning.
- Clean regularly the external walls of your device with warm water and wash liquid: avoid the abrasive towelling. Rinse your device with a wet sponge. Dry it with a soft cloth
- Every evening, clean the plastic stopper in hot water to avoid obstructing it
- Never clean the device under a water jet, the infiltrations would risk to damage it in a irreparable way.
- Never immerse the device, the cord or the plug in the water or quite other liquid to avoid any electric shock.
- During a prolonged non-use, we recommend you strongly to keep the device shielded from the humidity.

7. TECHNICAL SPECIFICATIONS

Model	DOUBLE WARM IT
Outside dimensions	330x215x230 mm
Weight	3 Kg
Power	2 x 170 W
No heating element	2
Current	1.6 A
Voltage	220-240 V ~

Wires colours correspondance

Phase
Neutral
Earth

Brown / Black / Grey
Blue
Yellow-Green

8. NORMS AND LEGALS DISPOSALS

The device is conform to :

IEC/EN 60335-1
IEC/EN 60335-2-15
EN 55014-1 + 55014+2

9. ELIMINATION OF THE ELECTRIC AND ELECTRONIC WASTE

The device respects the directives:

2002/96/ CE (DEEE) N°34270064800021
2002/95/CE (ROHS)
2066/95 CE
2004/108 CE



Reach rule

Never put the device among household waste.

The device must be put down in a centre of recycling for the electric equipments.

The materials of the device are indeed reusable. By eliminating correctly the electric and electronic wastes, the recycling and quite other shape of re-use of worn equipments, you participate in a significant way in the environmental protection.

For any information about the collection of electric and electronic waste, please contact your distributor.

10. GUARANTEE

Conditions of guarantee

The guarantee applicable to any device is the commercial guarantee of the distributor or the retailer. Please contact the store where you bought your device to know the precise conditions.

The guarantee grants no right for damages.

The dispositions which follow are not exclusive of the profit of the legal guarantee planned by articles 1641 and following ones of the Civil code relative to the defects and the latent defects.

Exclusion clauses of the guarantee

Bad installation and bad maintenance, in particular if they do not respect current regulations or instructions appearing in this user guide.

Cannot benefit from the guarantee the repairs required as a result of false operations, of inappropriate use, of carelessness or of excess loads of the device, as well as those resulting from variations of the power supply, over tension or from defective installations.

The damage due to shocks, bad weather is not flatware by the guarantee. The material travels at the risks of the user; in case of delivery by carrier, the consignee has to have reservations towards the carrier before any delivery of the device.

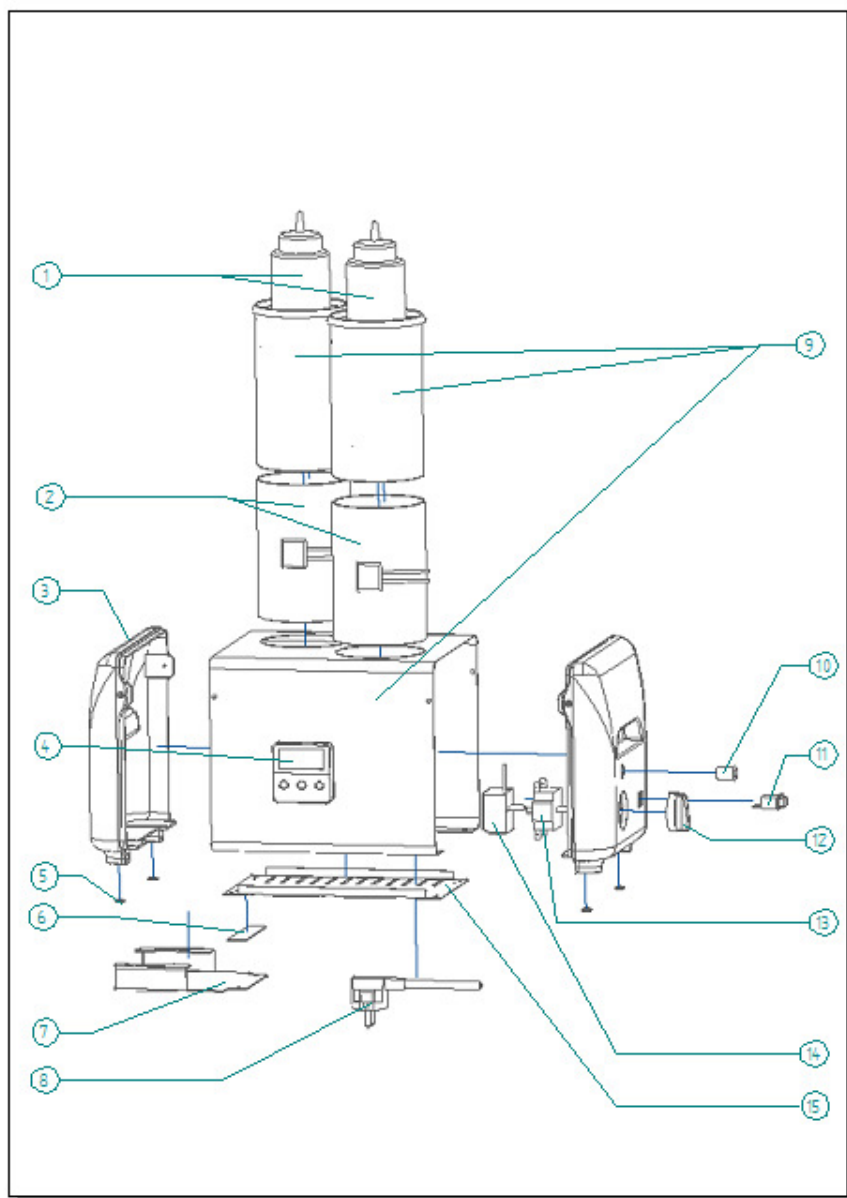
The guarantee comes to an end in case of intervention, of repair, of modification by no qualified persons, or of use in inappropriate purposes.

The squeeze bottles supplied with the machine are guaranteed for a optimum functioning with Warm it.

We refuse to accept any responsibility in case of use of any other model of bottle.

Nomenclature WARM IT DOUBLE (WI/2)
Spare parts WARM IT DOUBLE (WI/2)

Rep	Code	Qty	Pièce	Spare part
1	F07026	2	Bouteille plastique	Plastic bottle
2	D02173	2	Element chauffant	Heating element
3	H04221SER	1	Jeu coques plastique	Plastic side right and left
4	A02031	1	Minuterie	Timer
5	A12020	4	Pied	Leg
6	40306	1	Cale présentoir	Display block
7	40305	1	Présentoir	Display
8	C03002	1	Cordon avec prise	Cord with plug
9	40303SE	1	Ceinture +bac+collage	Casing+tank
10	A08009	1	Voyant vert	Green pilot light
11	A07014	1	Bouton poussoir	Sw itch knob
12	A14111	1	Bouton	Knob
13	A01021	1	Commutateur	Commutateur
14	A06021	1	Thermostat	Thermostat
15	40304	1	Fond	Bottom



G03295